

YUNPEN USA

YA-T1, YA-T3 SERIES

1. FEATURES

- General purpose filter with IEC Connector providing effective line-to-ground noise up to 10 amp., 250VAC
- Low cost
- Compact design
- 250 Fasten terminals (YA-T1)
- Solder lug terminals (YA-T3)
- All parts are approved by **UL, CSA, VDE, SEMKO, NEMKO, DEMKO** and **FIMKO**



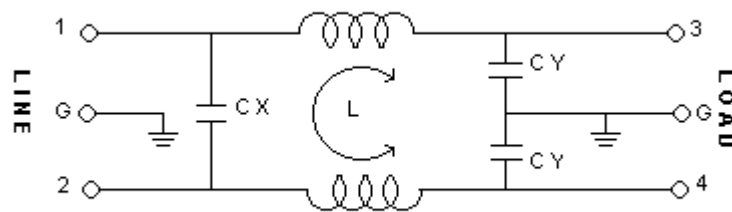
2. SPECIFICATIONS

ITEM \ MODEL		YA01T1/YA01T3	YA03T1/YA03T3	YA06T1/YA06T3	YA10T1/YA10T3
RATED VOLTAGE		250V AC	250V AC	250V AC	250V AC
RATED CURRENT		1A	3A	6A	10A
LEAK CURRENT		0.8mA MAX 250V,50HZ	0.8mA MAX 250V,50HZ	0.8mA MAX 250V,50HZ	0.8mA MAX 250V,50HZ
TEST VOLTAGE	LINE TO LINE	1450V DC	1450V DC	1450V DC	1450V DC
	LINE TO GROUND	2250V DC	2250V DC	2250V DC	2250V DC
INSULATION RESISTANCE		100M ohm MIN 250VDC	100M ohm MIN 250VDC	100M ohm MIN 250VDC	100M ohm MIN 250VDC
DIRECT CURRENT RESISTANCE		0.5 ohm MAX	0.2 ohm MAX	0.15 ohm MAX	0.1 ohm MAX
TEMPERATURE RISE		30C MAX	30C MAX	30C MAX	30C MAX
OPERATING TEMPERATURE		-25 ~ +85C	-25 ~ +85C	-25 ~ +85C	-25 ~ +85C
ATTENUATION	NORMAL MODE 25dbMIN	0.60 ~ 45MHZ	0.80 ~ 50MHZ	0.80 ~ 50MHZ	1.00 ~ 50MHZ
	COMMON MODE 25dbMIN	0.10 ~ 40MHZ	0.20 ~ 50MHZ	0.40 ~ 50MHZ	1.00 ~ 50MHZ
CX		0.1uF	0.1uF	0.1uF	0.1uF
CY		3300pF*2	3300pF*2	3300pF*2	3300pF*2
INDUCTANCE		3.7mH*2	1.8mH*2	0.7mH*2	0.3mH*2

3. NOISE ATTENUATION (dB)

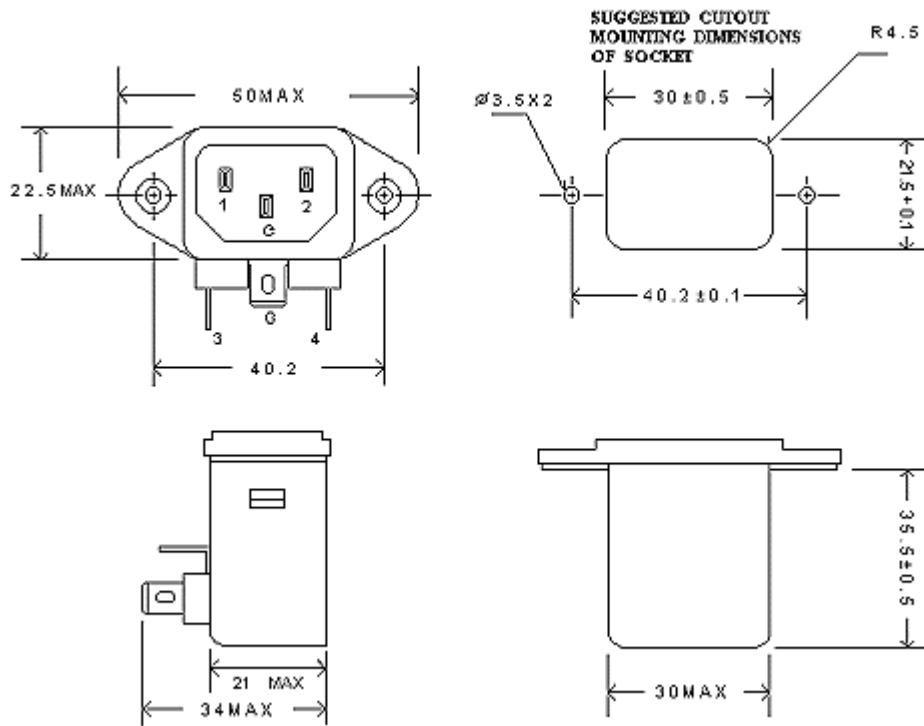
COMMON MODE (LINE TO GROUND) IN 50 OHM SYSTEM								
TYPE	CURRENT RATING	FREQUENCY-MHZ						
		0.15	0.5	1.0	5.0	10.0	30.0	
YA01T1/YA01T3	1A	25	35	38	37	37	37	
YA03T1/YA03T3	3A	23	33	37	38	40	39	
YA06T1/YA06T3	6A	15	21	25	37	38	43	
YA10T1/YA10T3	10A	5	14	21	34	38	42	
DIFFERENTIAL MODE (LINE TO LINE) IN 50 OHM SYSTEM								
YA01T1/YA01T3	1A	7	18	24	39	38	40	
YA03T1/YA03T3	3A	7	17	22	41	40	37	
YA06T1/YA06T3	6A	7	16	21	40	39	37	
YA10T1/YA10T3	10A	4	14	20	35	42	37	

4. CIRCUIT



5. DIMENSION (mm)

YA01T1~YA10T1



YA01T3~YA10T3

